

Siedlung Hardturm, Kraftwerk 1  
Stücheli Architekten  
Bünzli Courvoisier



Projekt Spreefeld, WEG Spreefeld  
Carpato Schönigh  
FAT Koehl Architekten  
BAR Architekten



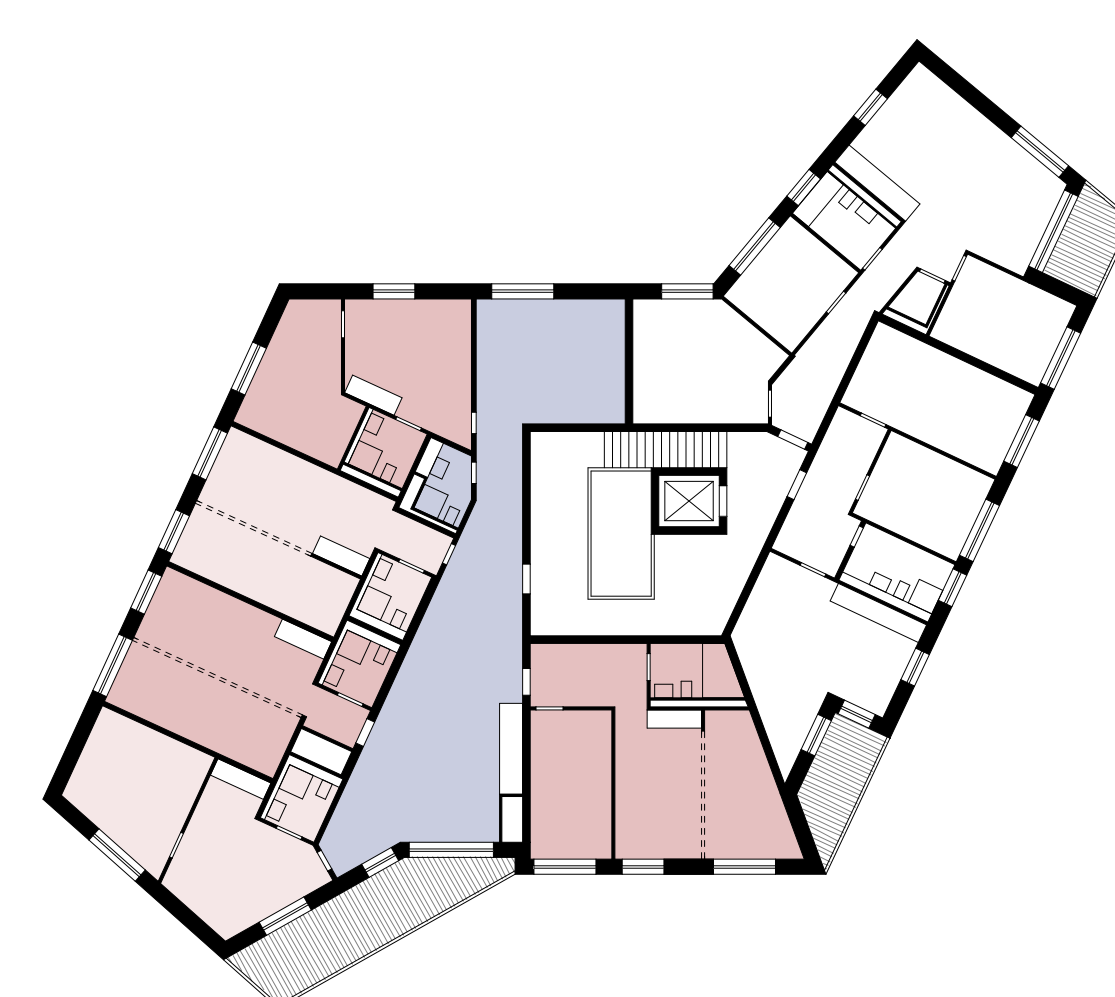
Wohnhaus Kanzlei, Winterthur-Seen  
Haerle Hubacher Architekten



Projekt Stuckmatte, wohnenplus  
Brügger architekten AG



Mehrgenerationenhaus Heizenholz, Kraftwerk 1  
Adrian Streich Architekten



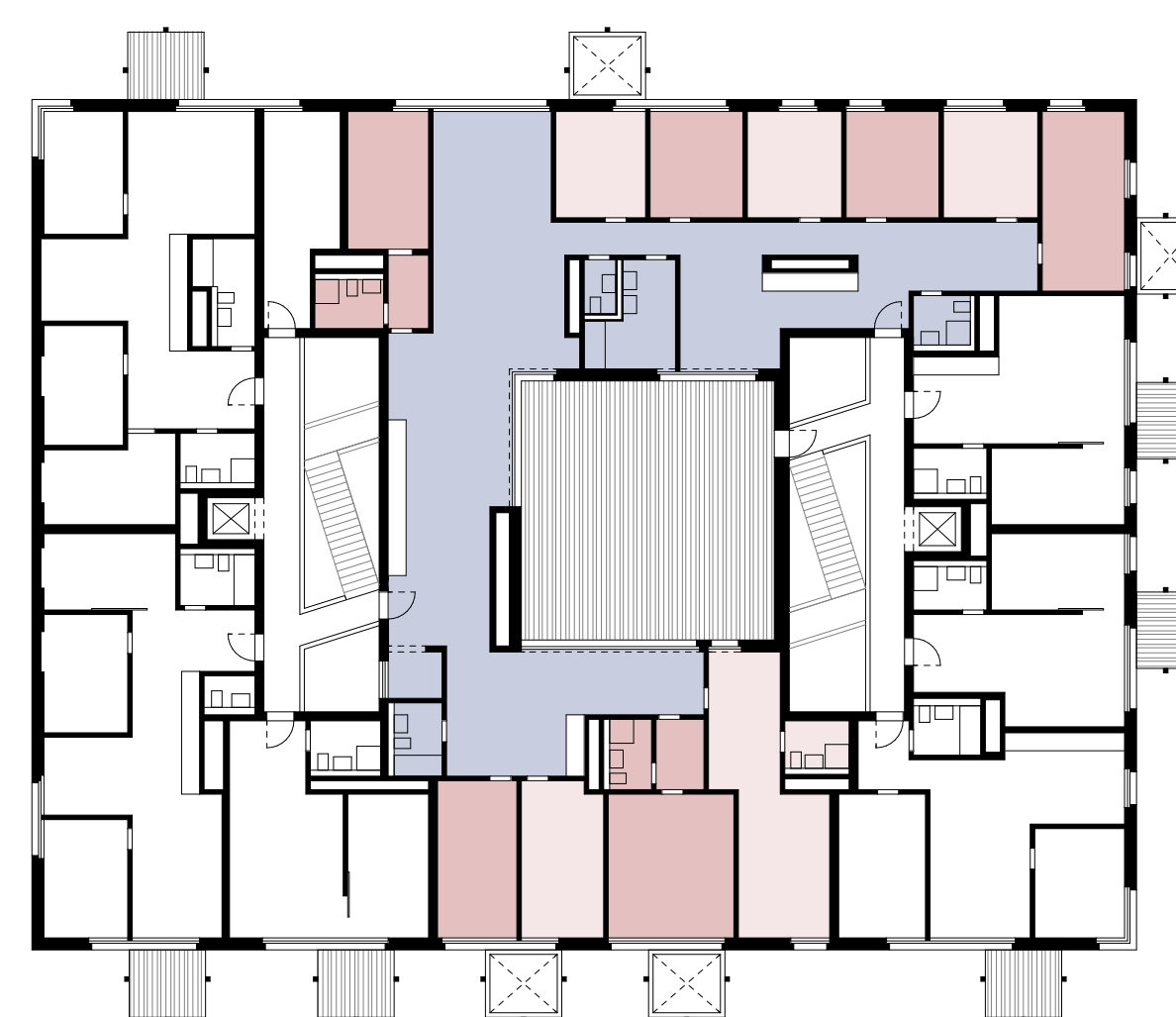
WagnisART, Genossenschaft Wagnis  
Arge Bogevischs Architekten  
Schindler Habbe Architekten



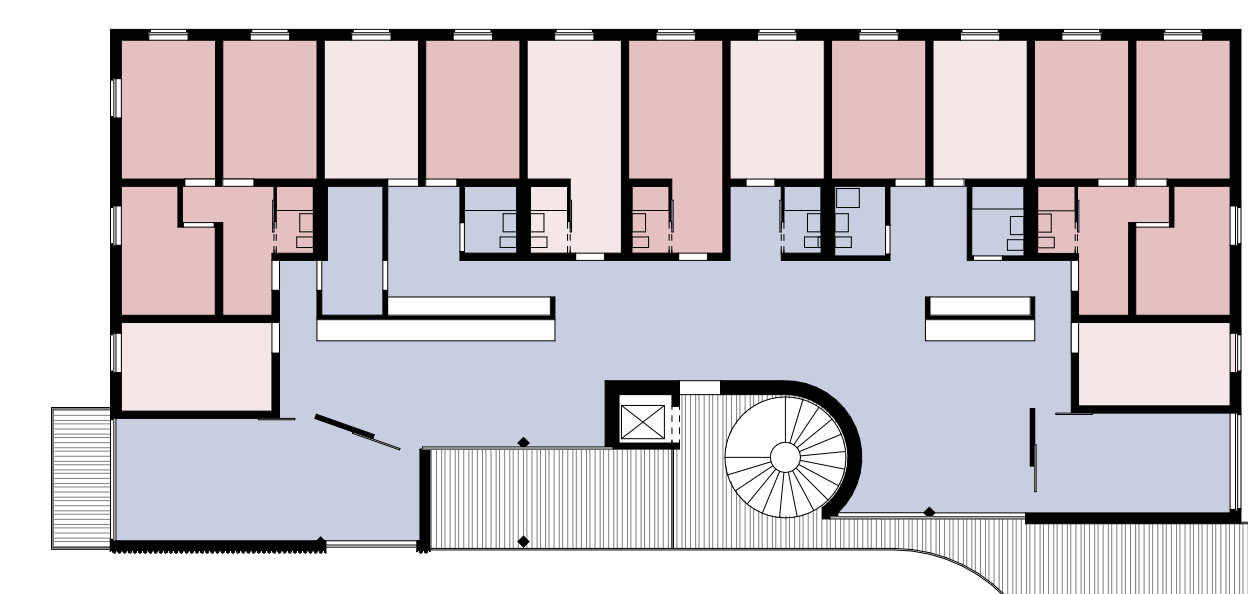
Clusterwohnungen Hunzikerareal, Mehr als Wohnen  
Duplex Architekten  
Futurafosch



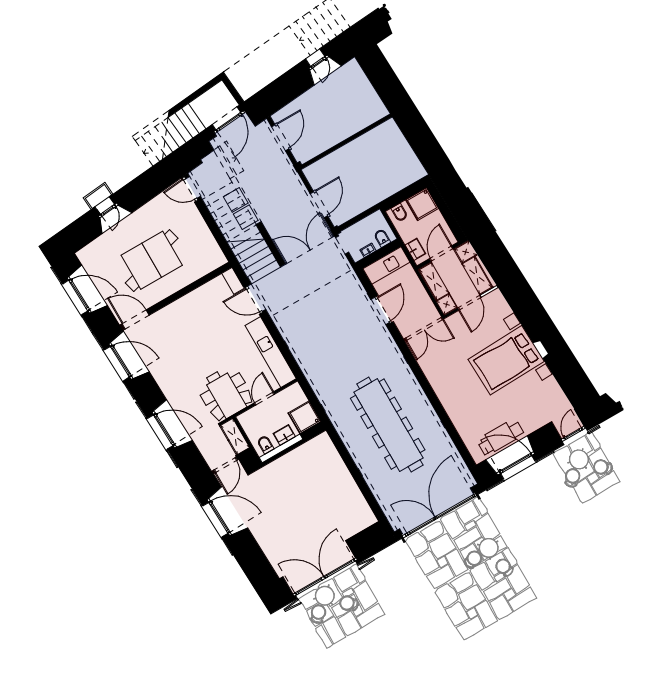
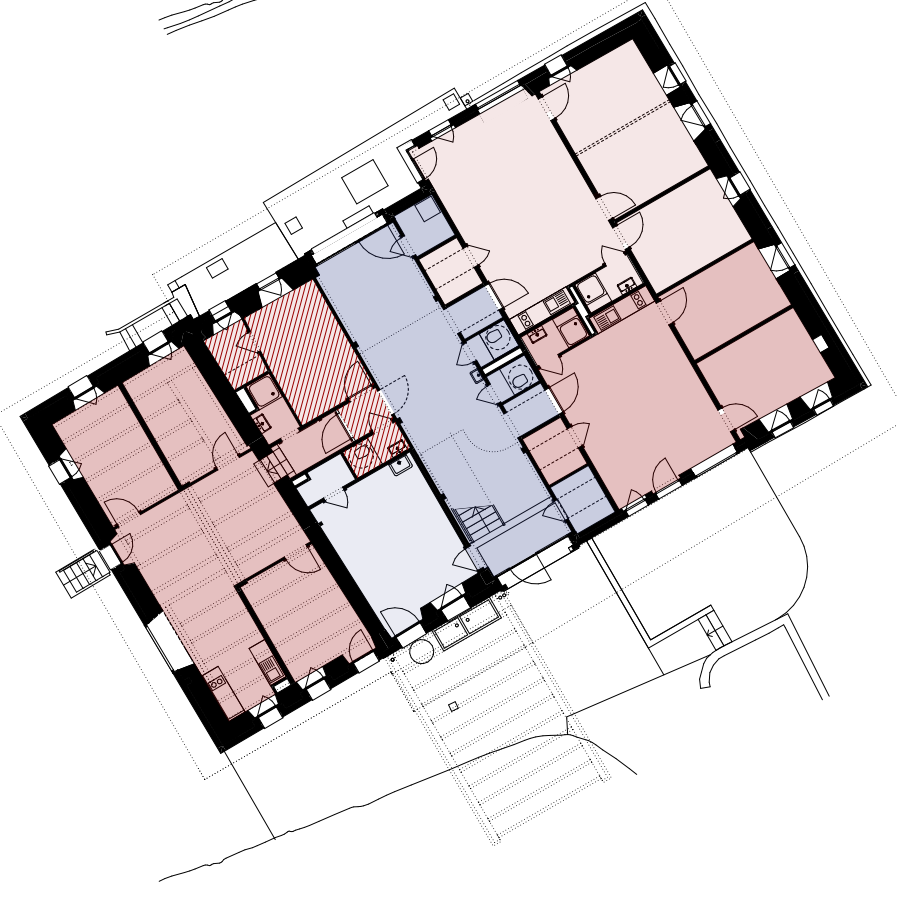
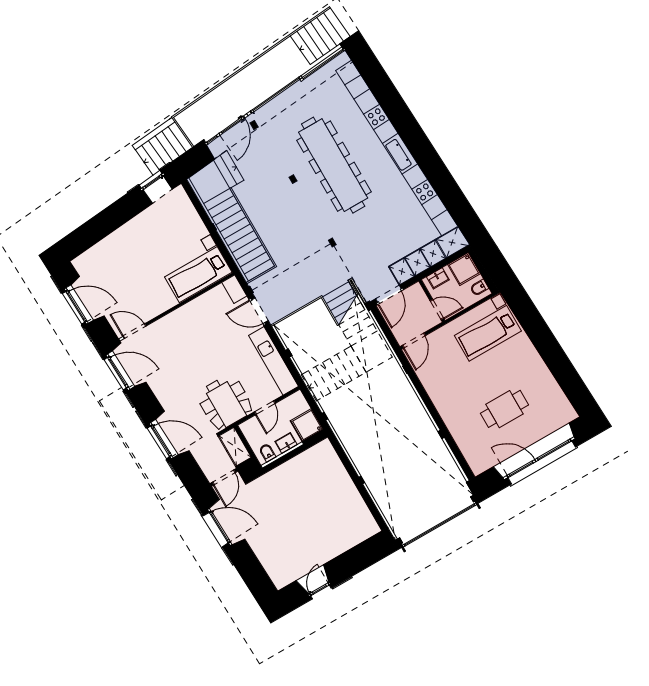
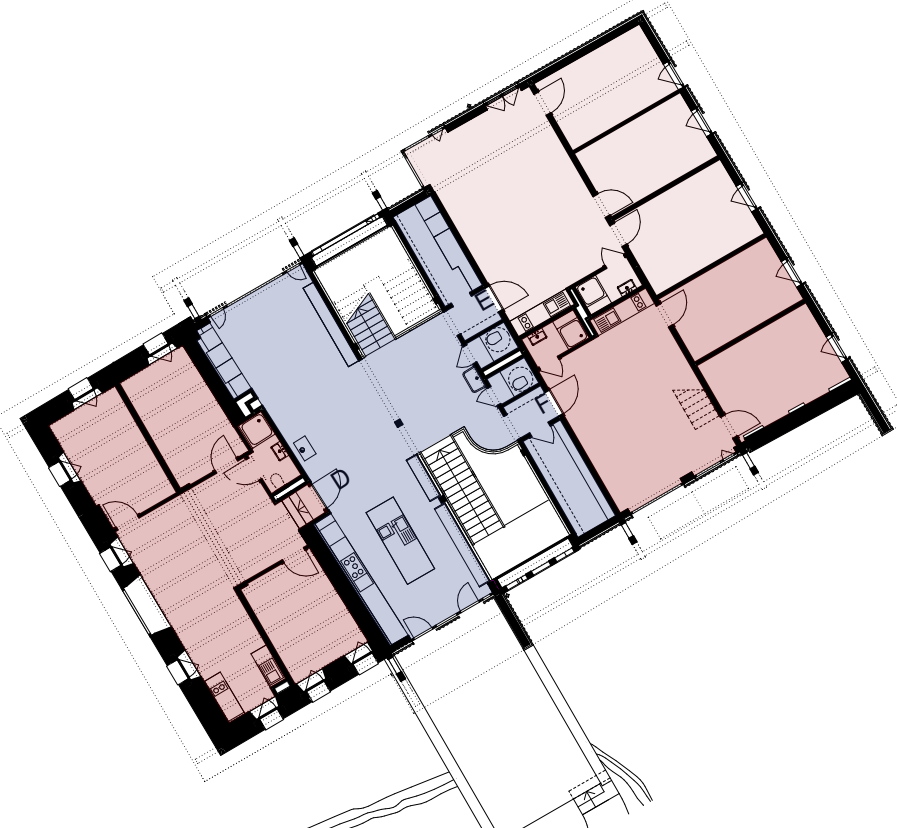
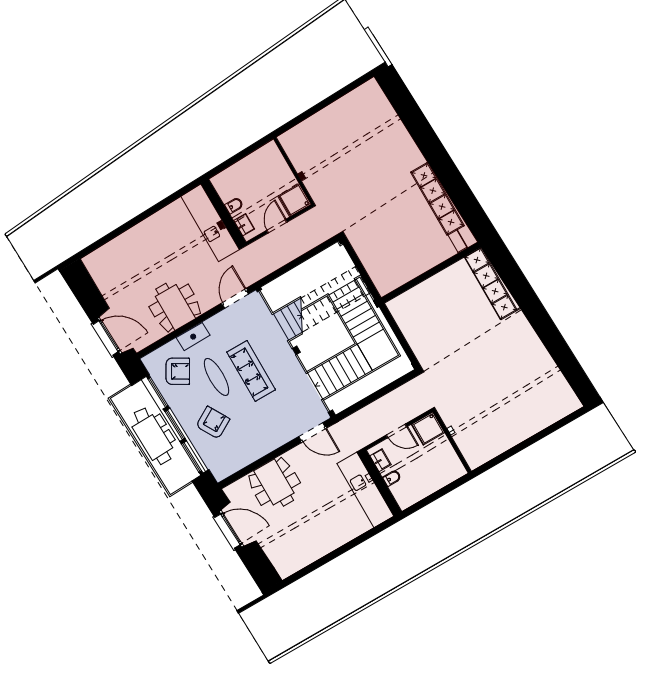
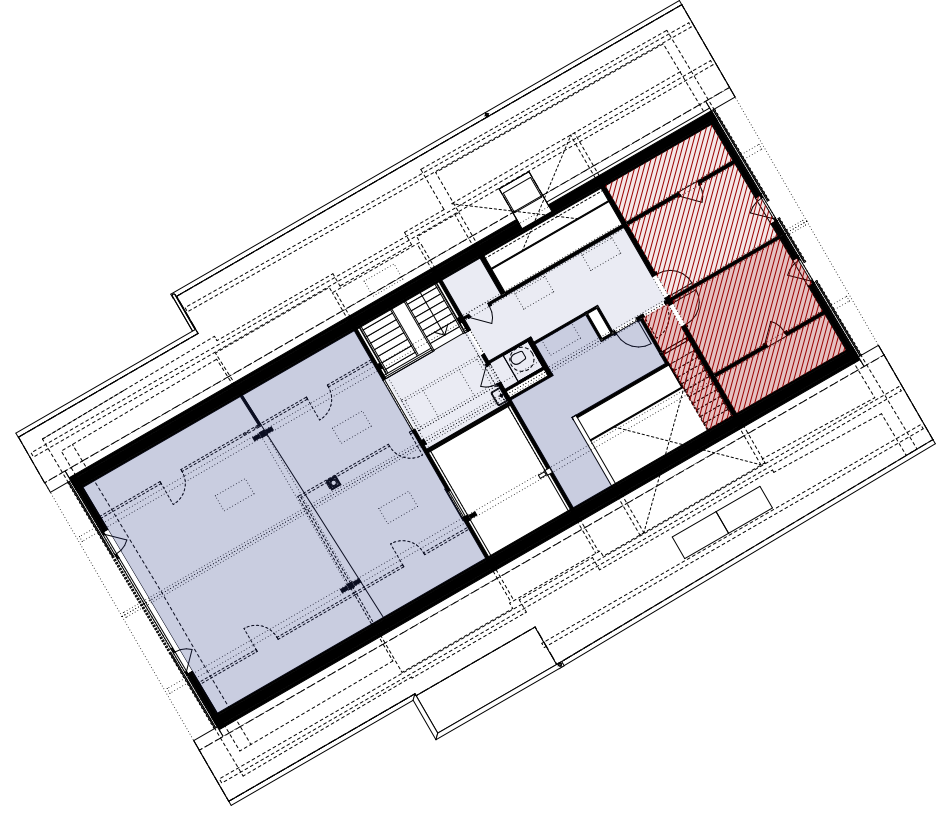
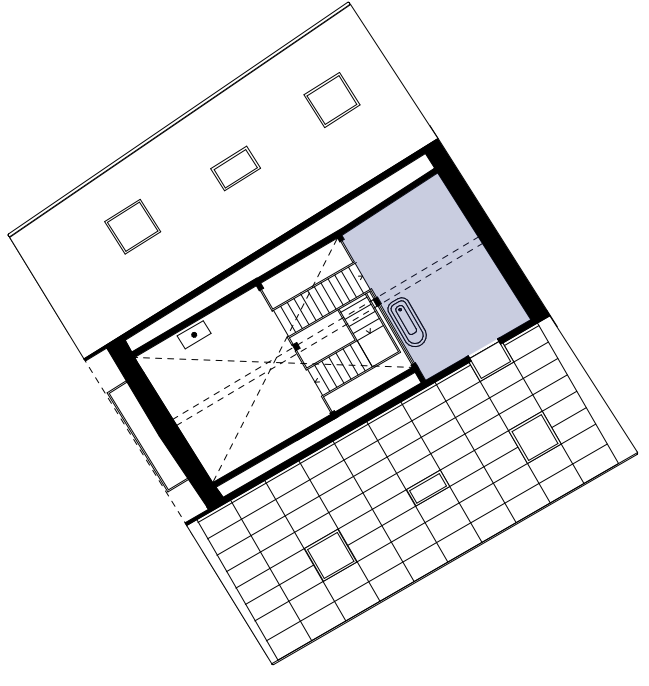
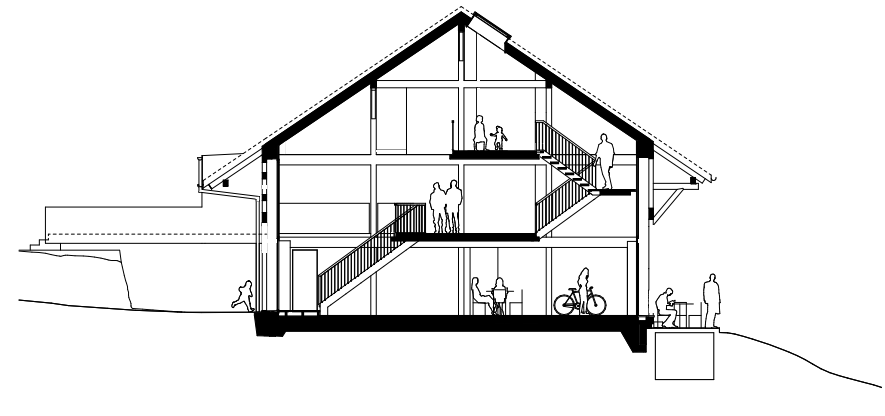
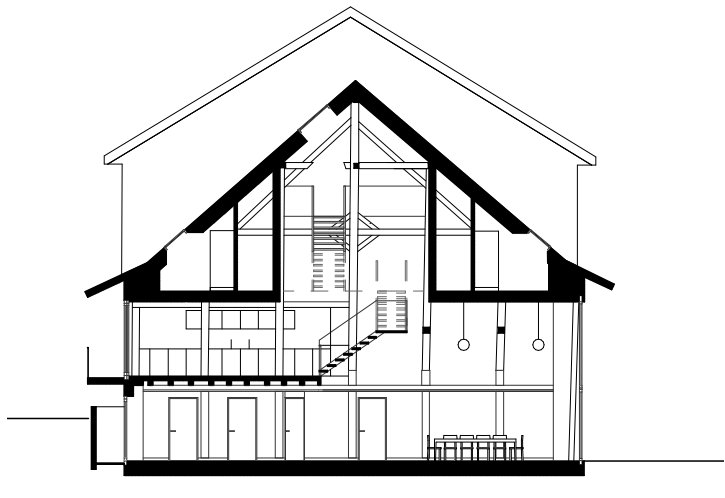
Projekt Inklusiv Köln, Verein inklusives Wohnen  
Pacher Dormagen



Projekt Zwicky Süd, Kraftwerk 1  
Schneider Studer Primas

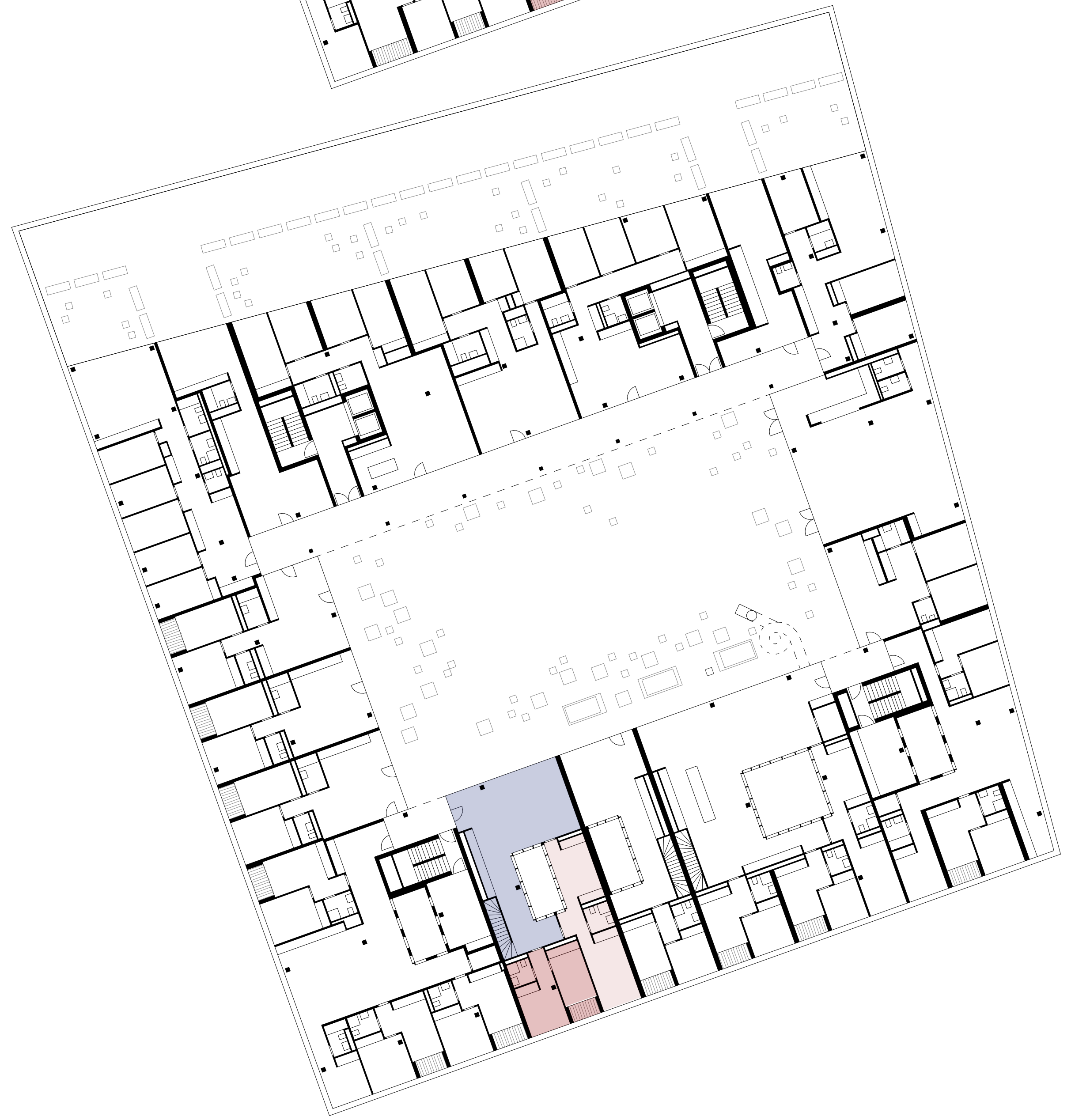
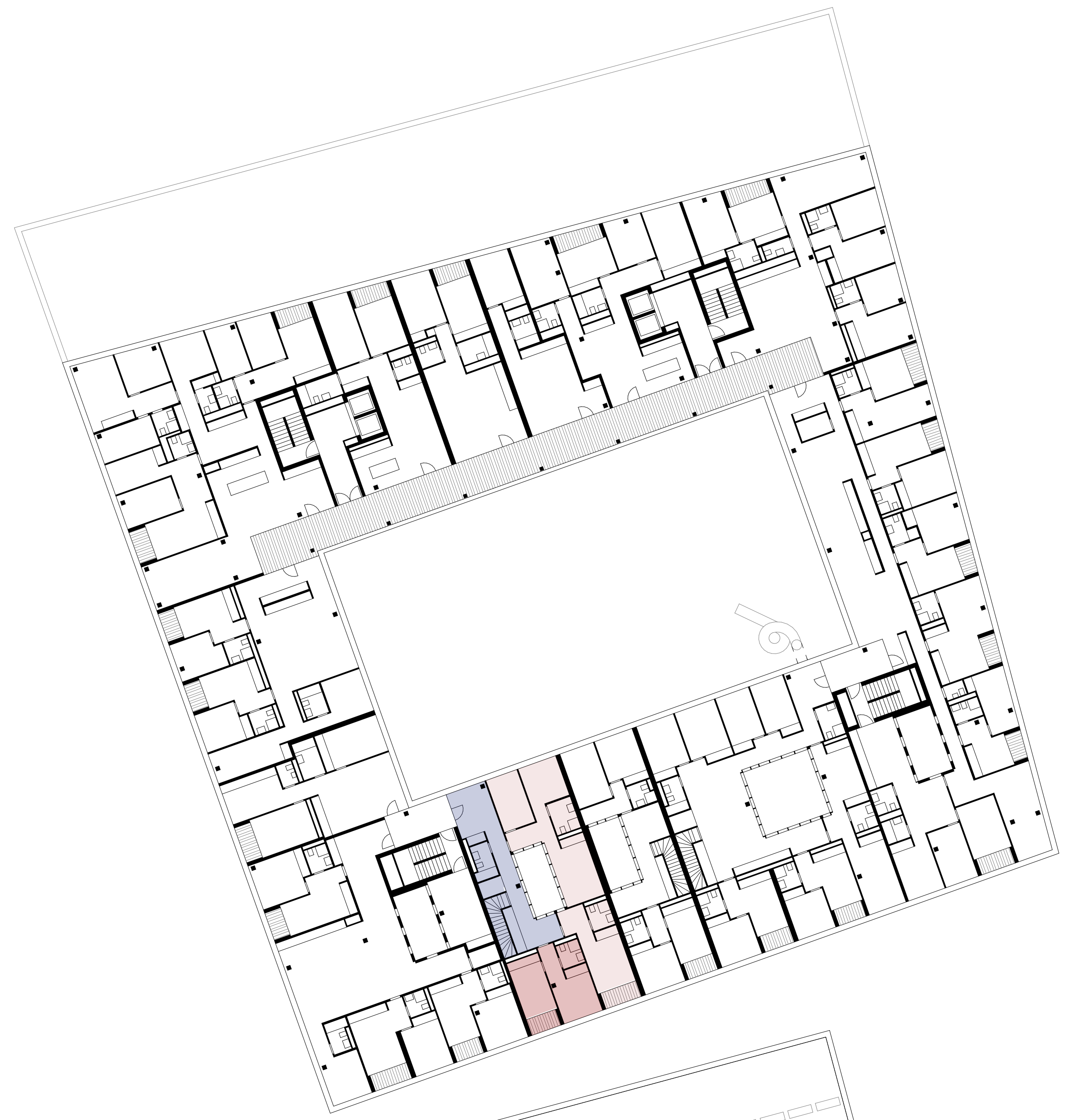


Projekt Hobelwerk, Mehr als Wohnen  
Pascal Flammer Architekten



Chauchy, Denens  
ArigeCO

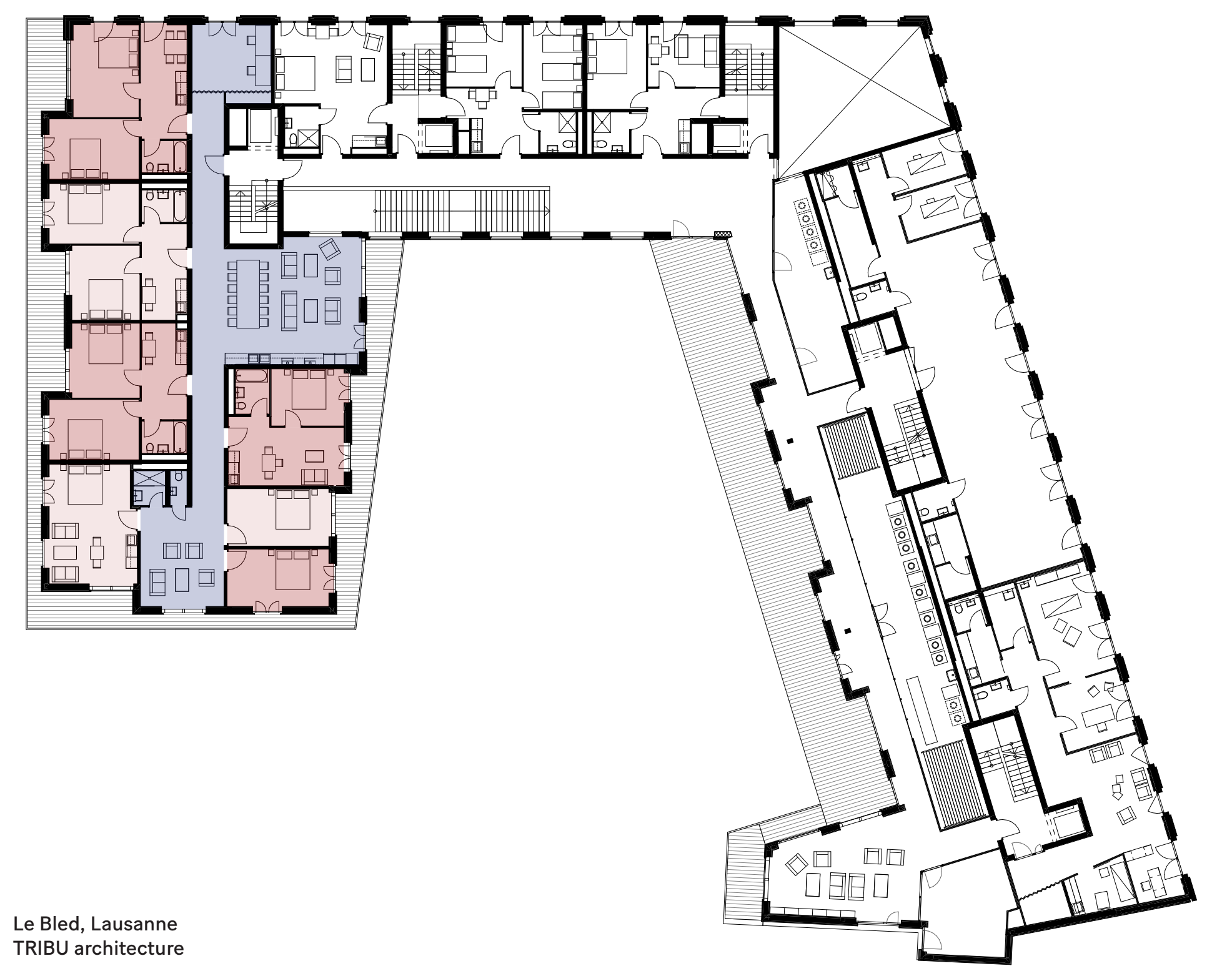
Les coloriés, Attalens  
Philippe Veluzat  
Sébastien Tripod



Codha Junction, Genève  
Dreier Frenzel



Kalkbreite, Zurich  
Müller Sigrist Architekten



Le Bled, Lausanne  
TRIBU architecture

Grandes colocations - Table ronde - 20 mars 2024

Ech. 1/250 0 2 5 10 m

commun  
privé

Crédits documents :  
Planche 1: Thiesen, C. 2023. Clusterwohnungen als Impulsgeber für nachhaltiges, zukunftsfähiges Wohnen. In : Y. Dreier, E. Frenzel (Eds.), *Social Loft*, (pp. 90-103). Triest Verlag.  
Planche 2 : auteurs des projets